

The Cornish Pasture

Winter 24 hour Rogaine 10-11 June 2006

Incorporating the 2006 Paddy Pallin School Championships

Paddy Pallin

Setters and Veters

John Tanner
Frank Coning
Keith Stewart
Ashley Horton
Daniel Bond

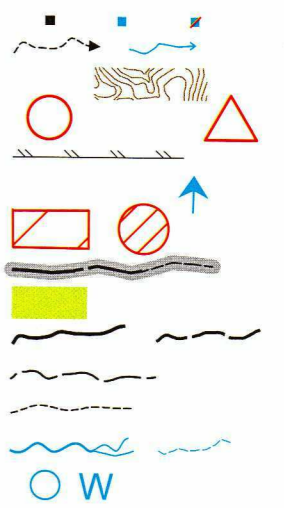
This map was produced by the Western Australian Rogaining Association wa.rogaine.asn.au.

Data supplied by DOLA and used under copy licence 393/93.

Possession of this map does not give right of entry to this area.

LEGEND

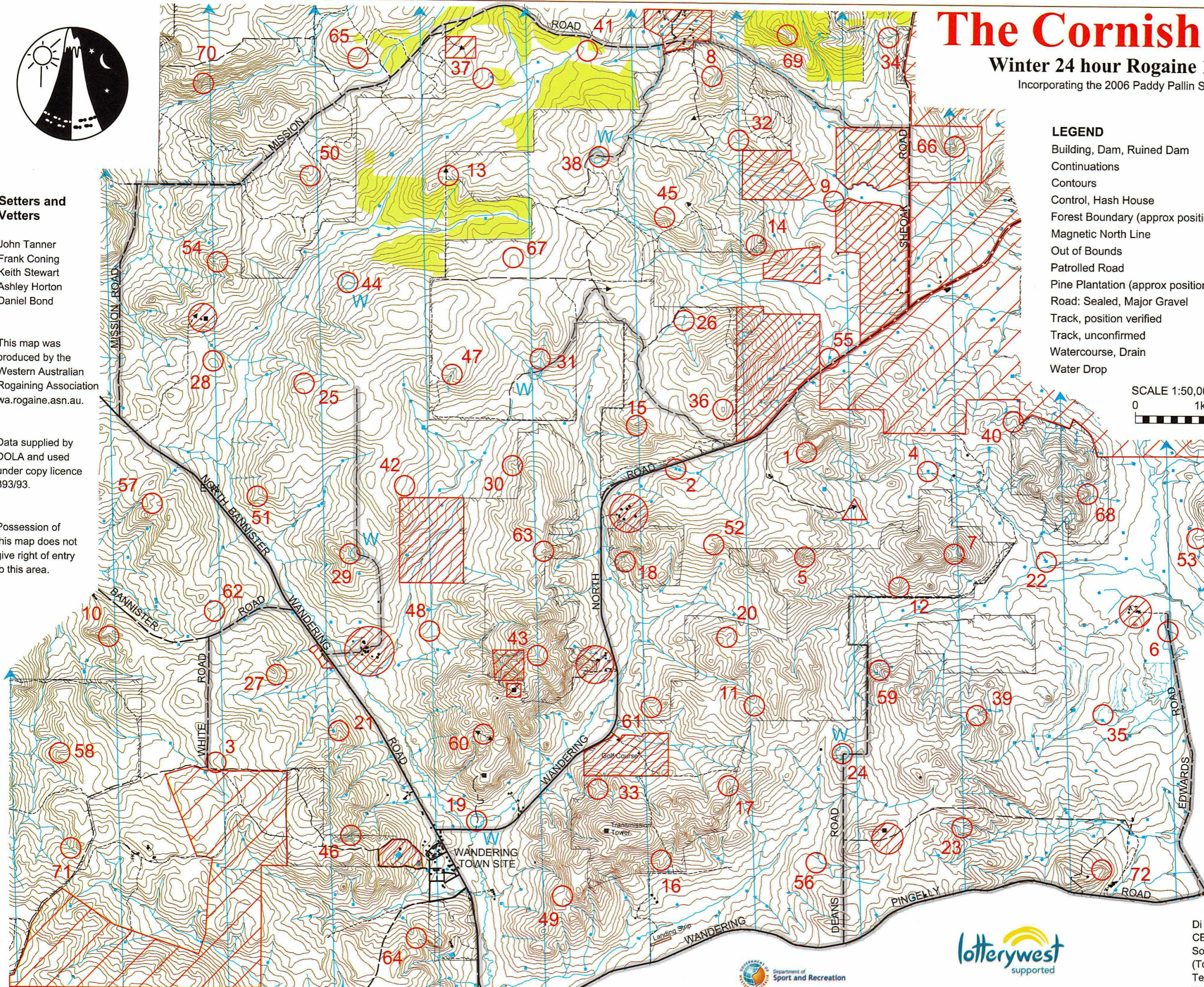
- Building, Dam, Ruined Dam
- Continuations
- Contours
- Control, Hash House
- Forest Boundary (approx position)
- Magnetic North Line
- Out of Bounds
- Patrolled Road
- Pine Plantation (approx position)
- Road: Sealed, Major Gravel
- Track, position verified
- Track, unconfirmed
- Watercourse, Drain
- Water Drop



SCALE 1:50,000, 5 metre contour interval
0 1km 2km 3km

Thanks to the Land Owners and Managers

- Brian & Jacque Cornish
- Colin & Kaye Boyle
- Peter Coxon
- David & Steph Cornish
- Murray Cornish
- Tim Haslem
- Allan & Jason Dean
- Barry Edwards
- Terrill Ferguson
- Chad & Julie Ferguson
- Sean, Hutton & Caroline Craig
- Siobhan Hoare
- Basil & Maria Joldescu
- Michael Miller
- Tom & Val Price
- Joe & Jackie Schorer
- Callum Sinclair
- Reuben Steer
- Lethea Stevens
- Bill & Jenny Stevens
- Bob & Inez Treasure
- Peter Warburton
- Dean & Diane Warburton
- Ross & Wilma Warburton
- Geoff & Judy Watts
- Max & Virginia Watts
- Steve & Marie Watts
- Laurie & Margaret White
- Don & Carol White
- John & Maxine Whitely
- Brendon & Adrienne Whitely
- Owen & June Woolfitt
- John, David, Leisa & Roma Turton
- CALM (Kym Pearce)
- Di Lallo Holdings (Cliff Ferguson)
- CBH (Graham Smallman, Malcolm Gillett)
- Southern Aboriginal Corporation (Tony Ramsay, Peter Wright)
- Teresa Fancote, Dean Irving
- Water Corporation (Adria Stratco)



The Cornish Pasture. WARA Winter 24 Hour, 10-11 June 2006.

No.	Description	Points	No.	Description	Points	Important Information
1	The knoll	20	43	The saddle	60	Control Cards From 1130 Saturday Briefing 1145 Saturday Start 1200 noon Saturday Finish 1200 noon Sunday Hash House Opens at 1600 Sat Closes at 1300 Sun Sunset 1722 Sunrise 0712 Moonrise 1545 Moonset 0534 Late Penalty 10 points per minute or part minute Controls Used 72 Total Points 4080
2	The windmill	20	44	The spur, WATER	60	
3	The spur	20	45	The western gully, head of	60	
4	The dam, 130 m at 106 degrees	20	46	The watercourse junction	60	
5	The watercourse junction, north western one	20	47	The watercourse	60	
6	The road bend, west side	20	48	The spur	60	
7	The saddle	30	49	The saddle, 35 m at 330 degrees	70	
8	The spur, steep edge of	30	50	The spur	70	
9	The northern watercourse	30	51	The spur	70	
10	The gully	30	52	The knoll	70	
11	The saddle	30	53	The spur	70	
12	The spur	30	54	The saddle, 20 m at 180 degrees	70	
13	The saddle	40	55	The dam, south side	80	
14	The saddle	40	56	Southern edge of small tree grove (80m x 50m)	80	
15	The spur, steep edge of	40	57	The spur with large boulders	80	
16	A saddle	40	58	A gully, head of	80	
17	A knoll	40	59	A saddle	80	
18	The saddle	40	60	A knoll with a tall blackboy	80	
19	The track, at a shady spot, WATER	40	61	The spur	90	
20	A saddle	40	62	A knoll	90	
21	A knoll, rocky, small	40	63	The knoll, rocky	90	
22	The dam, 75m at 160 degrees	40	64	The saddle, north side	90	
23	The gully, head of	40	65	The spur	90	
24	The road bend, WATER	40	66	The spur	90	
25	A knoll, east end	50	67	The spur, broad	100	
26	The watercourse	50	68	The spur	100	
27	The spur	50	69	The spur, rocky, narrow part	100	
28	The knoll, west side	50	70	The gully, head of, 30m south of steep moss/grass covered clearing (50m x 70m). Clearing is very slippery - cross with care.	100	
29	The knoll, WATER in laneway 100 m east	50	71	The spur	100	
30	A knoll	50	72	The spur	100	
31	The watercourse, WATER on track, 200 m at 210 degrees	50	Water Drops: At or near controls 19, 24, 29, 31, 38, 44			
32	The spur, tip of	50	Patrolled Roads: North Bannister - Wandering Road			
33	The "echidna" saddle	50	Wandering - Pingelly Road, White Road, Wandering North Road			
34	The watercourse	50	Sheok Road, Mission Road, Deans Road, Edwards Road			
35	A fence intersection, 10 m at 320 degrees	50	Tracks as marked			
36	The knoll	50				
37	The spur, broad	50				
38	The gully, head of, WATER 30 m west (south of track)	50				
39	The gully, head of	50				
40	The spur	50				
41	The pines - south west corner	50				
42	A small tree grove (90m x 40m)	50				